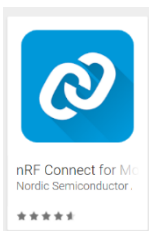
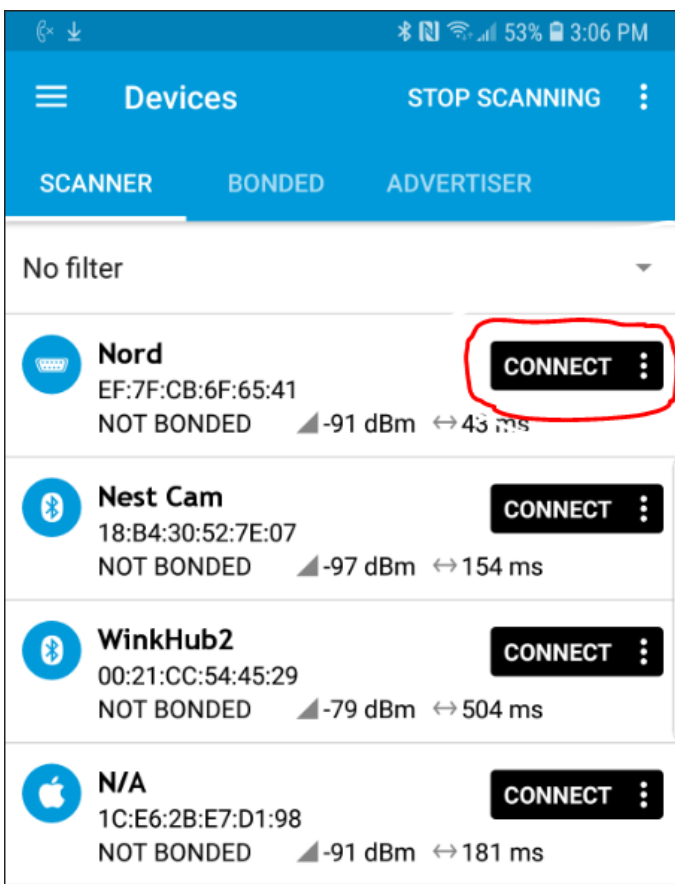


# HELMET AND MOTORCYCLE TRANSCEIVER WIRELESS UPDATE INSTRUCTIONS (ANDROID):

Please familiarize yourself with the instructions that follow before you begin. Steps 6 – 11 must be completed in 3 minutes. Both the Helmet Unit (HL firmware) and Motorcycle Unit (MC firmware) can be updated. Please be careful to install ONLY HL firmware to the helmet unit and MC firmware to the motorcycle unit. Each unit must be updated separately.



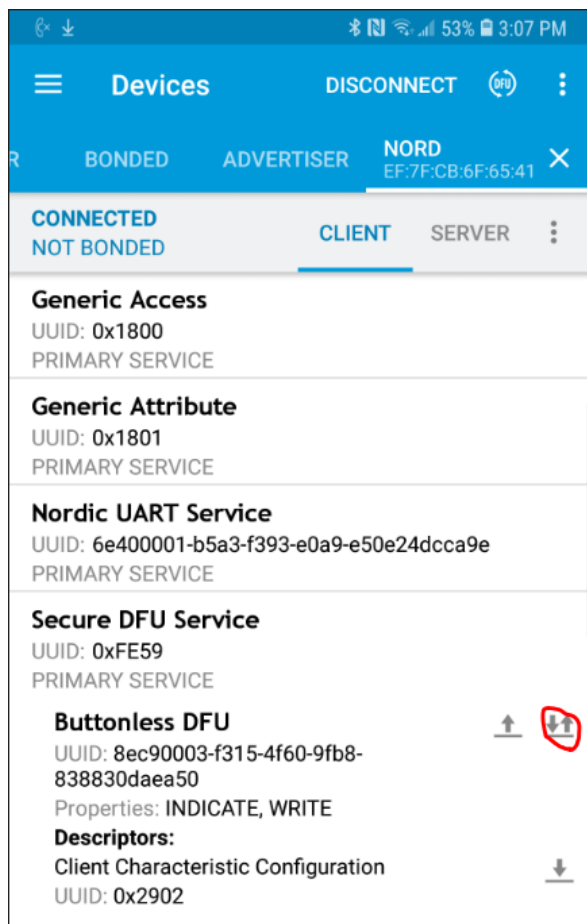
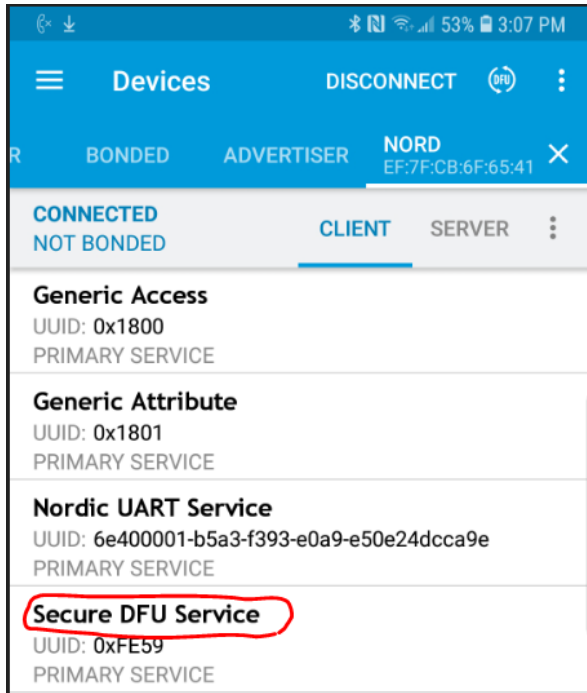
- 1) Please install *nRF Connect* from Google Play.
- 2) Next, download the updated firmware to your phone or transfer it from your computer to your phone.



- 3) On your Android phone, go into the nRF Connect app. (Make sure your Bluetooth is turned on).

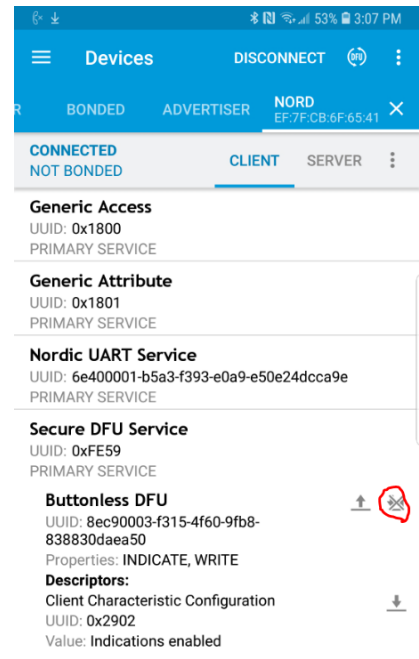
Please Note: the device you are updating must be powered on (i.e. good batteries in the helmet unit or the motorcycle unit turned on). It is best to do them away from each other so you don't confuse which one you are updating.

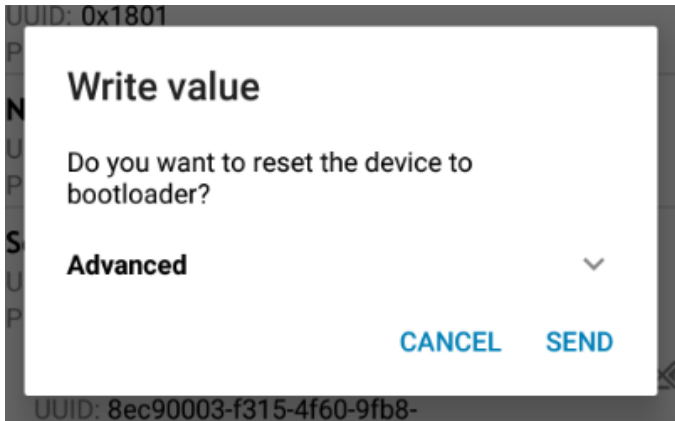
- 4) **\*\*TO UPDATE THE HELMET UNIT\*\*** Under the tab, "Scanner" several devices pop up. Connect to device called "Nord"
- 5) **\*\*TO UPDATE THE MOTORCYCLE UNIT\*\*** Under the tab, "Scanner" several devices pop up. Connect to device called "Nordic Buttonless"



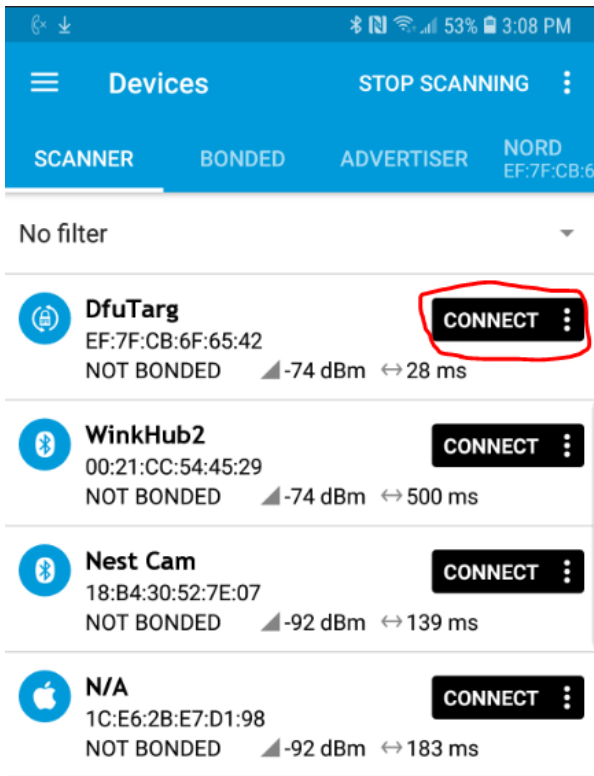
6) Scroll down and click on “Secure DFU Service”.

7) Under this service is “Buttonless DFU” (see left). There should be two buttons next to the name. One button is an up arrow and one button is an up and down arrow. Tap the up and down arrow (see left), an X should appear over it (see below):

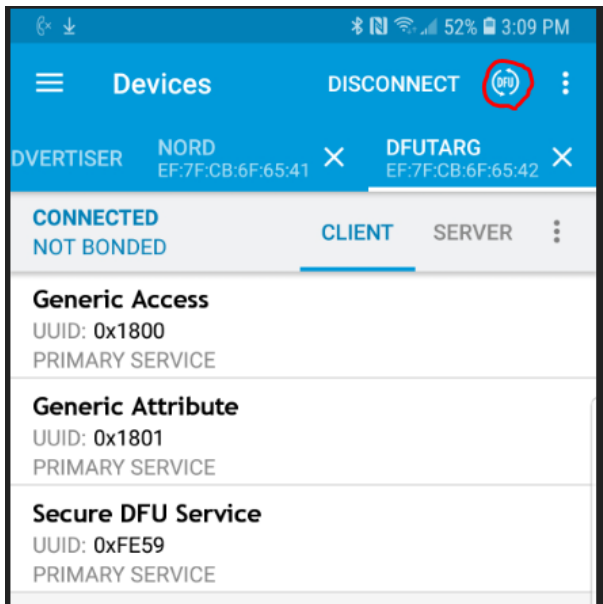




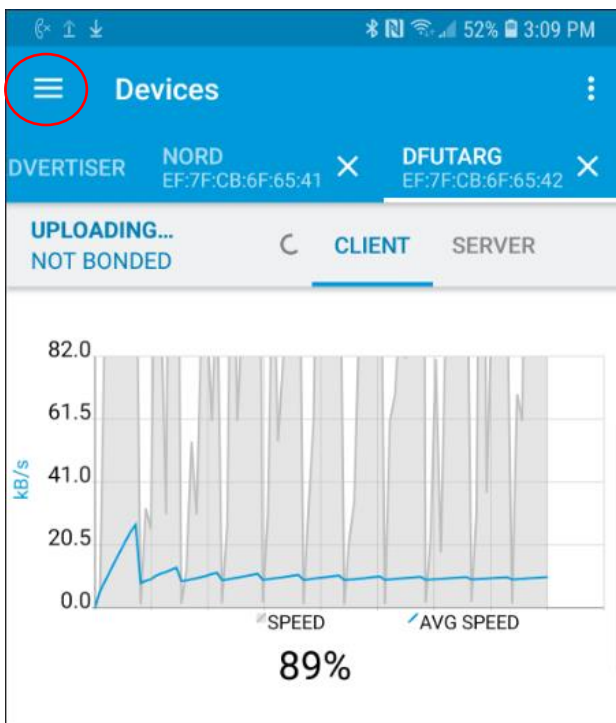
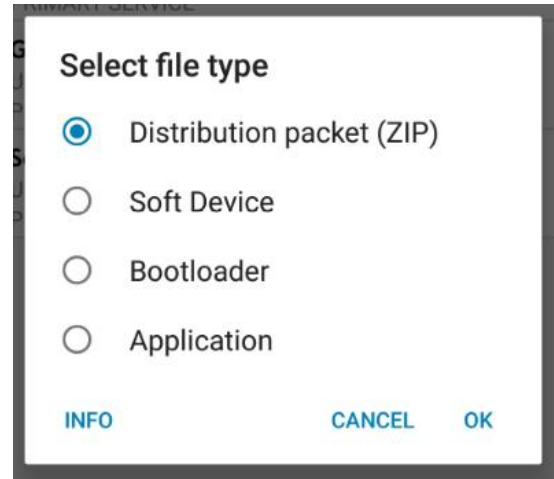
- 8) Next tap the up arrow. A window will pop up and ask if you want to reset the device to bootloader. Tap "SEND"
- 9) (If you are updating the helmet unit, the left helmet lights should turn on. This indicates it's in its bootloader mode and ready for programming.) In either case, please note that the transceiver (helmet or motorcycle) is in the bootloader mode for only 3 minutes and the remaining steps must be completed before it times out. If the LED lights go out, and you have not completed the upload and you will need to repeat steps 4 –6.



- 10) Swipe right to go back to the tab labeled "Scanner" and refresh the scanner. A device called "DfuTarg" now shows up. Connect to this device. The lights on the helmet should change to the right and left turn signals. This indicates it's connected.



11) There is a small circle labeled “DFU” next to the DISCONNECT button near the top of the screen. Tap the small DFU circle. A window opens up and asks for the file type. Make sure Distribution packet (ZIP) is selected then tap OK.



1) Now you can select which ZIP packet you’d like to upload. Browse within the application (click on the 3 bars highlighted in the screen to the left and browse to the location where you saved the new firmware). Select the file you downloaded to your phone. PLEASE SELECT VERSION HL TO UPDATE THE HELMET LIGHT AND MC TO UPDATE THE MOTORCYCLE UNIT. UPDATING THE SOFTWARE CAN DAMAGE THE UNIT!

12) Once the ZIP packet is selected, a window will pop up with a graph. Congratulations! This is the phone loading the new firmware. You will see a line move across the graph and get a success message when completed. If you do not see a line go across the graph and the percent loaded does not display then it did not succeed.